

A REQUEST FOR PROPOSAL FOR PROFESSIONAL SERVICES CONTRACT

Department of Highways
Professional Services Procurement Bulletin 2022-10
Kenton | 6-80002 | KY-236

This document constitutes a Request for Proposals for a Professional Service Contract from qualified individuals and organizations to furnish those services as described herein for the Commonwealth of Kentucky, Department of Highways.

I. PROJECT DESCRIPTION

County - Kenton
Route - KY-236
Item No. - 6-80002.00
Project Description - Reconstruct KY 236 (Stevenson Road) from Alice Street to Jacqueline Drive

II. PROJECT INFORMATION

Project Manager - Mike Bezold, P.E.
User Division - Highway Design
Approximate Fee - \$700,000 Preliminary Engineering & Environmental Services (Lump Sum)
Project Funding - State Funds (SPP funds)
Project Length - Approximately 1.227 miles

III. PURPOSE AND NEED

Provide a modern multi modal transportation facility from Alice Street to Jacqueline Drive that fits into the community while improving vehicular flow and correcting drainage issues.

IV. DBE REQUIREMENT

The Consultant team shall include a DBE Participation Plan with their Response to Announcement to help the Department meet the 11.95% DBE goal established by FHWA. The plan needs to demonstrate how DBE companies will be mentored or used to assist in the area(s) pertaining to this contract. An additional page will be allowed in the Project Approach (Section 7) to demonstrate this plan.

V. SCOPE OF WORK

- Preliminary Line & Grade plans for KY-236 from Alice Street to Jacqueline Drive
- Updated Survey will be required
- Conduct public involvement activities if necessary

- Development of Cost estimates associated with Phase I Design
- Identify Right of Way and Utility impacts
- NEPA documentation
- Development of the Design Executive Summary

This project may be advanced to Final Design upon the completion of Preliminary Engineering with a Contract Modification. The selected Consultant will then be required to provide engineering services to perform Final Roadway and Structural Design, including the preparation of any design studies, drainage design, right-of-way plans, construction plans, traffic control plans, and cost estimates as well as any other services that KYTC chooses not to perform with in-house forces.

VI. SPECIAL INSTRUCTIONS

The Department may retain any of the advertised services to be performed by in-house state forces.

Instructions for Response to Announcement can be found at:

<https://transportation.ky.gov/ProfessionalServices/Pages/Respond-to-an-Announcement.aspx>

VII. AVAILABLE STUDIES

[Tag 12 Full Plan Set - Stevenson Road/Dixie/Turkeyfoot - Kenton | 6-80002 | KY-236](#)

VIII. METHOD OF DESIGN

The selected Consultant shall utilize the most recent CADD Standards for Highway Plans Policy in the development of the highway plans. Refer to the 2019 CADD Standards for ORD V4 Project Development Memo for information pertaining to the latest CADD Standards and plan submittal.

IX. ENVIRONMENTAL SERVICES

Any necessary Environmental Services are expected to be provided by the Consultant. The anticipated environmental document will be a Categorical Exclusion Level 2. Prequalification of various Environmental Services are required to be identified in the Consultant's Response to Announcement.

X. PHOTOGRAMMETRIC SERVICES

The Department will provide LiDAR digital mapping and will furnish manuscripts on computer disks in DGN format. The selected Consultant shall supplement this information with conventional surveying as needed.

XI. STRUCTURE DESIGN

Structure Design is not anticipated for Preliminary Design. When the project advances to Final Design and if the selected Consultant is retained for Final Design services, the selected Consultant shall do the necessary engineering services to submit to the KYTC an Advanced

Situation Folder(s) for the appropriate structure(s). The selected Consultant may be responsible for any necessary Structure Design services. Structure Design of the proposed structure(s) may be added as a Contract Modification. Prequalification in the area of Structure Design is not required to be identified in the Consultant's Response to Announcement; however, the selected Consultant must obtain the required qualifications before providing these services, or bring a prequalified subconsultant at that time.

XII. GEOTECHNICAL SERVICES

The Department is expected to provide all Geotechnical Services but the selected Consultant may be asked to provide Geotechnical Services required for the project. The Preliminary Design contract may include preliminary geotechnical services to review available geological, mining, or other geotechnical information that could influence the selection of the preferred alternate. Geotechnical services necessary for the completion of Final Design may be added by contract modification at the appropriate time. At any time, if the Department has the capacity to provide these services, the Department may retain the advertised geotechnical services. Prequalification in the area of Geotechnical Services is not required to be identified in the Consultant's Response to Announcement; however, the selected Consultant must obtain the required qualifications before providing these services, or bring a prequalified subconsultant at that time.

XIII. TRAFFIC ENGINEERING

The Department will provide all traffic projections and related information.

The selected Consultant will provide the analysis of the existing and proposed operations. Traffic Signal Design and Lighting Design services, if necessary for the completion of Final Design, may be added by Contract Modification at the appropriate time. At any time, if the Department has the capacity to provide these services, the Department may retain the advertised traffic services.

XIV. UTILITIES

The selected Consultant shall provide a project location map to the Department. The Department will send project location maps to all potential utility contacts to determine whether they may have existing utilities within these project limits. The Department will develop the utility contact list. Facility atlas maps received for this project will be provided to the selected Consultant. All utilities including aerial carriers shall be field-verified by the Consultant. Sizes and types of underground and aerial utilities shall be identified on the plans for each alignment alternative in the PL&G submittal.

The selected Consultant will provide SUE (Subsurface Utility Engineering) work as needed to field-locate utilities. Horizontal and vertical location of existing utilities shown in the roadway plans shall be adjusted by the Consultant as necessary to reflect actual SUE results.

The Department will authorize B.U.D. (Before You Dig) to field-locate utilities during final design. The consultant shall perform field surveys to collect the B.U.D. data. Horizontal location of existing utilities shown on final plans shall be adjusted as necessary to reflect actual B.U.D. locates.

XV. PREQUALIFICATION REQUIREMENTS

To respond to this project the Consultant must be prequalified in the following areas by the response due date of this advertisement:

Environmental Aquatic & Terrestrial Ecosystems Analysis

- Fisheries
- Botany
- Terrestrial Zoology
- Wetlands
- Freshwater Macroinvertebrates
- Water Quality

Environmental Archeology & Other Services

- Air Quality Analysis
- Prehistoric Archaeology
- Socio-Economic Analysis
- Highway Noise Analysis
- Historic Archaeology
- Environmental Document Writing & Coordination
- Cultural-Historic Analysis

Roadway Design

- Rural Roadway Design
- Surveying
- Urban Roadway Design
- *Advanced Drainage Analysis & Design* (see note below)*

Geotechnical Services* (see note below)

- **Geotechnical Engineering ***
- **Geotechnical Drilling ***
- **Geotechnical Laboratory Testing ***

Structure Design* (see note below)

- **Spans Under 500 Feet ***

Traffic Engineering* (see note below)

- *Traffic Engineering**
- *Electrical Engineering Traffic Signals**

Utility Design* (see note below)

- *Water & Sewer Level 2**
- *Water & Sewer Level 1**

** Note – These prequalifications are not required with the initial proposal as it is uncertain to the extent practicable if they are necessary. Should these services become necessary during the delivery of the project in this or future phases, the selected Consultant team must obtain the required qualifications before providing those services, or bring on a prequalified subconsultant at that time.*

XVI. PROCUREMENT SCHEDULE

Dates other than Response Date are tentative and provided for information only.

- Advertisement Date: April 12, 2022
- Response Date: May 4, 2022 by 4:30 PM ET (Frankfort Time)
- First Selection Meeting: May 9, 2022
- Final Selection: May 25, 2022
- Pre-Design Conference: June 1, 2022
- Consultant Fee Proposal: June 10, 2022
- Contract Negotiations: June 22, 2022
- Notice to Proceed: July 13, 2022

XVII. PROJECT SCHEDULE

- Preliminary Line and Grade Inspection December 2022
- Environmental Document March 2023
- Right of Way Plans June 2023
- Joint Inspection October 2023

XVIII. EVALUATION FACTORS

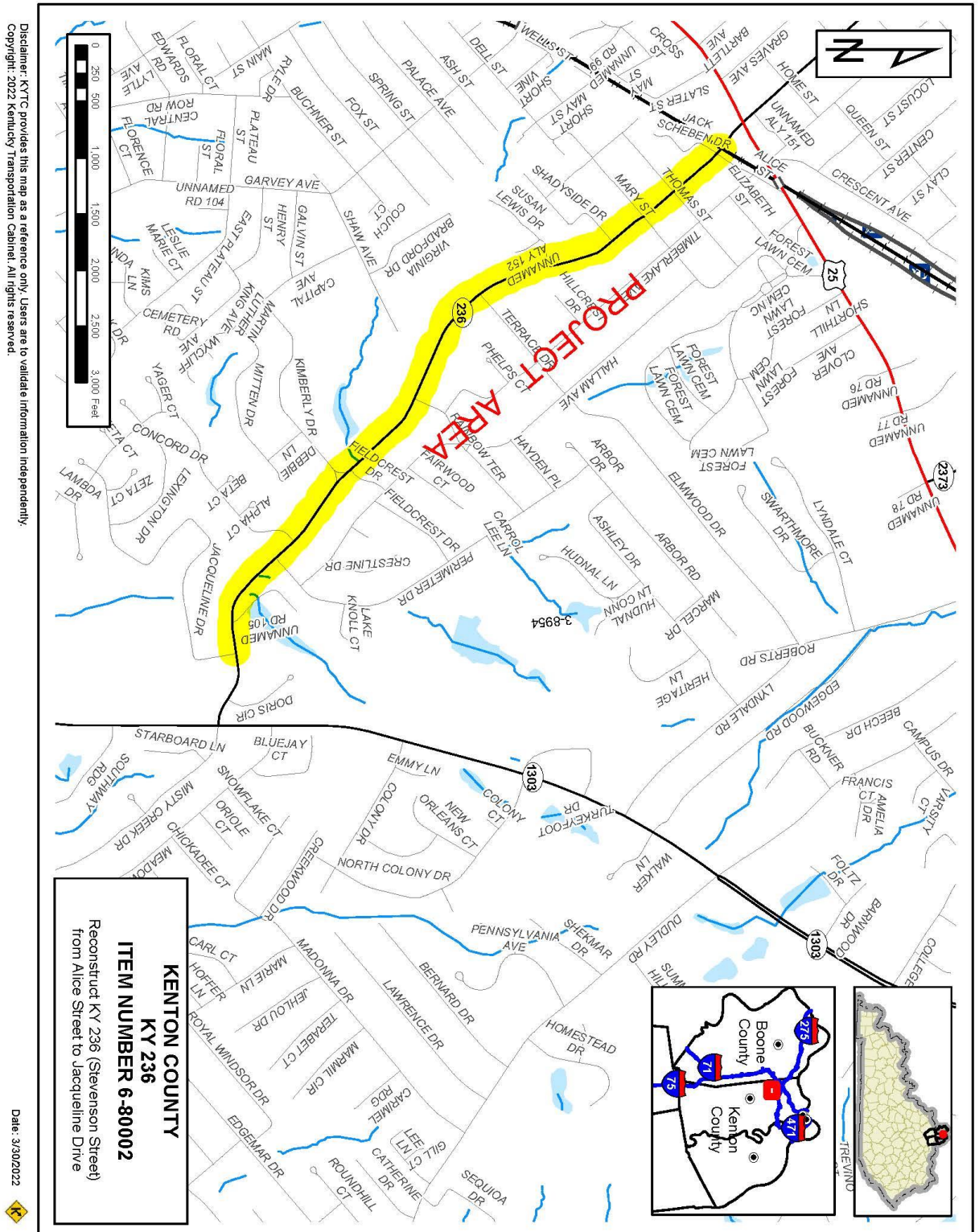
Consultants will be evaluated by the selection committee based on the following, weighted factors:

1. Project approach and proposed procedures to accomplish the services for the project. (20 Points)
2. Relative experience of consultant personnel assigned to project team with highway project for KYTC and/or federal, local or other state governmental agencies. (15 Points)
3. Past record of performance on projects similar in type and complexity. (15 Points)
4. Capacity to comply with project schedule. (15 Points)
5. Knowledge of the locality and familiarity of the general geographic area. (2 Points)

XIX. SELECTION COMMITTEE MEMBERS

1. Mike Bezold, P.E., User Division
2. Amanda Desmond, P.E., User Division
3. Erika Drury, P.E., Secretary's Pool
4. Joseph Van Zee, P.E., Secretary's Pool
5. Cindy Evensen, Governor's Pool

XX. AREA MAP



Disclaimer: KYTC provides this map as a reference only. Users are to validate information independently.
 Copyright: 2022 Kentucky Transportation Cabinet. All rights reserved.